

Monofilament Recovery & Recycling Program
Washington Department of Fish & Wildlife
Interim Report

Erin Dilworth, Habitat Biologist
Erin.Dilworth@dfw.wa.gov
11/01/2017

Summary

Beginning in January of 2016, Washington Department of Fish and Wildlife (WDFW) Habitat Program began implementing the Monofilament Recovery and Recycling Program (MRRP) in WDFW Regions 4 and 6. Monofilament recycling bins were constructed and installed by two Washington Conservation Corps crews at various water access sites around the Puget Sound. Bin materials were purchased by WDFW. To date, 86 bins have been installed and additional bins are being planned for installation.

Monofilament recycling bins have been placed at the following WDFW Water Access Sites:

Map No.	Site Name	Map No.	Site Name	Map No.	Site Name
1	American Lake	18	Benson Lake	33	Munn Lake
2	Clear Lake	19	Black Lake	34	Nisqually River
3	Geneva Lake	20	Boston Harbor	35	Offut Lake
5	Holm Lake	21	Carney Lake	36	Pattison Lake
6	Kapowsin Lake	22	Hicks Lake	37	Phillips Lake
7	Dolloff Lake	23	Hoodsport Hatchery	38	Spencer Lake
8	Killarney Lake	25	Deveraux Lake	39	Summit Lake
9	Morton Lake	26	Mcintosh Lake	40	Ward Lake
10	North Lake	27	Nahwatzel Lake	41	Island Lake
11	Ohop Lake	28	St. Clair Lake	88	Misery Point
12	Rapjohn Lake	29	Lawrence Lake	89	Point no Point
14	Steele Lake	30	Long Lake	90	Pleasant Harbor
15	Tanwax Lake	31	Lost Lake	91	Point Whitney
17	Whitman Lake	32	Luhr's Landing	93	Isabella Lake

Monofilament recycling bins have been placed at the following State Parks:

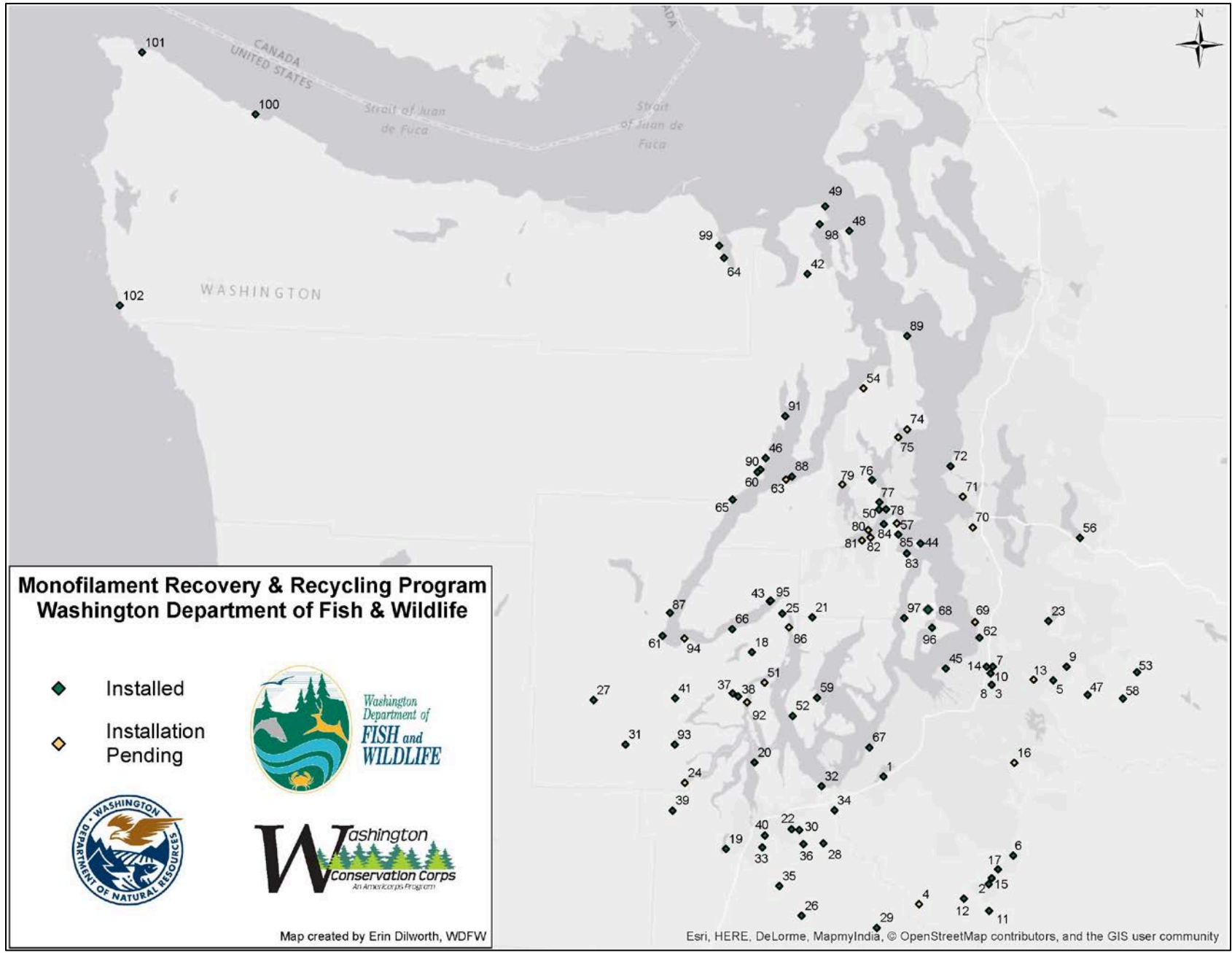
Map No.	Site Name	Map No.	Site Name
42	Anderson Lake	53	Kanaskat-Palmer
43	Belfair	56	Sammamish Lake
44	Blake Island	58	Nolte
45	Dash Point	60	Pleasant Harbor
46	Dosewallips	61	Potlatch
47	Flaming Geyser	62	Saltwater
48	Fort Flagler	64	Sequim Bay
49	Fort Worden	65	Triton Cove
50	Illahee	66	Twanoh
52	Joemma Beach		

Monofilament recycling bins have been placed at the following Ports/Piers:

Map No.	Site Name	Map No.	Site Name
67	Clyde Davidson Pier	87	Hoodsport Pier
68	Tramp Harbor Pier	95	Mason Lake County Park
72	Shilshole Marina A Dock	96	Jensen Point Park
76	Brownsville Dock	97	Lisabuela Beach
77	Illahee City Pier	98	Port Townsend Marina
78	Point White Pier	99	John Wayne Marina
83	Harper Pier Yukon Harbor	100	Olson's Resort
84	Waterman Point Pier	101	Big Salmon Resort
85	Manchester Boat Dock	102	Quileute Marina

Monofilament recycling bins have been proposed for installation at the following sites:

Map No.	Site Name	Map No.	Site Name
4	Harts Lake Access Area	71	Elliot Bay at Terminal 86
13	Soos Creek	74	Indianola Pier
16	Weiss Access Area	75	Suquamish Dock
24	Kennedy Creek Access Area	79	Silverdale Pier
51	Jarrell Cove State Park	80	Bremerton Marina Public Dock
54	Kitsap-Memorial State Park	81	Port Orchard Marina
59	Penrose Point State Park	82	Annapolis Dock Retsil Pier
63	Scenic Beach State Park	86	Allyn Pier
69	Des Moines Marina Pier	92	Latimer's Landing
70	Spokane Street Bridge	94	Union Ramp



MRRP Facilitation

To date, approximately 42,000 feet of monofilament has been recovered from the monofilament recycling bins – with more recovered line to be sorted and measured. In addition to monofilament, we have also recovered fishing hooks, lures, and trash, including beverage containers, diapers and a hypodermic needle.

The WCC crew time spent on bin construction, installation monofilament sorting and travel to bin sites totals approximately 380 hours. Washington Department of Fish and Wildlife Access Area staff spent on bin installation and monofilament sorting totals approximately 100 hours. Washington Department of Fish and Wildlife Biologist time spent on program facilitation (acquiring supplies, maintenance coordination and tracking, development of project partnerships, etc.) totals approximately 260 hours.

Challenges

- Obtaining bin content information from partners
- Constituents using bins as trash receptacles
- Finding new sites to install bins
- Developing new partnerships/organizations willing to “adopt” bins
- WDFW website redesign delaying development of MRRP webpage

MRRP Partners

Partnerships with WDFW’s Habitat Program, fostered through MRRP facilitation include the following groups:

WDFW Wildlife Program	Port of Brownsville
WDFW Fish Program	Port of Ilahae
Washington State Parks	Bainbridge Island Metro Park & Recreation District* ⁺
Town of Steilacoom	Port of Silverdale* ⁺
Vashon Park District	Port of Bremerton
City of Seattle*	Port of Waterman
Port of Seattle* ⁺	Port of Manchester
City of Des Moines*	Port of Allyn
Port of Indianola	Port of Hoodspout
Suquamish Tribe	Mason County Parks & Trails

* Contact made, awaiting response

*⁺ Contact established, awaiting approval for bin installation